

ATC® Blade-Type Fuse Panels

SPECIFICATIONS

Interchangeable Blade Terminals: Accepts ATC® blade-type fuses or Series 22X circuit breakers.

Wiring: Output terminals - .250" x .032" QC rated 30A max. per circuit; Input terminals - #10-32 stud input rated 100A max.

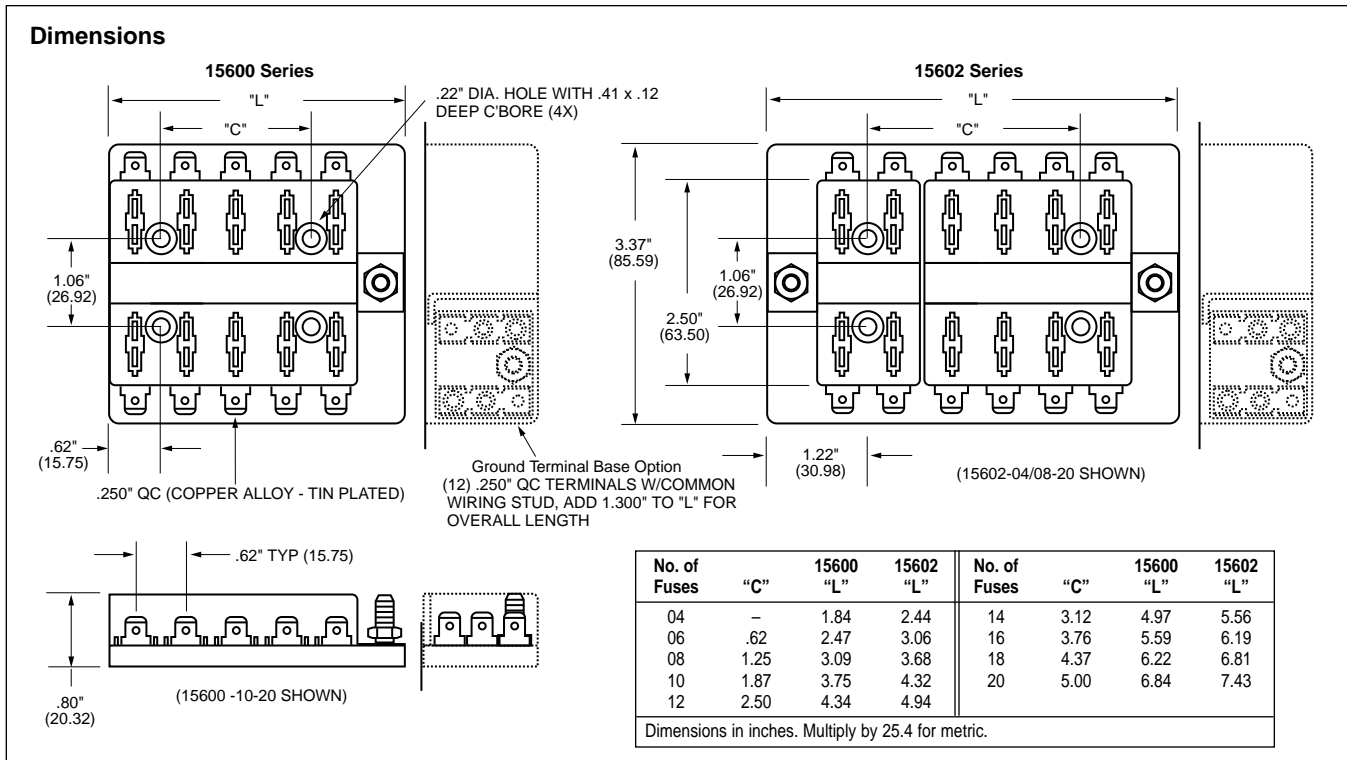
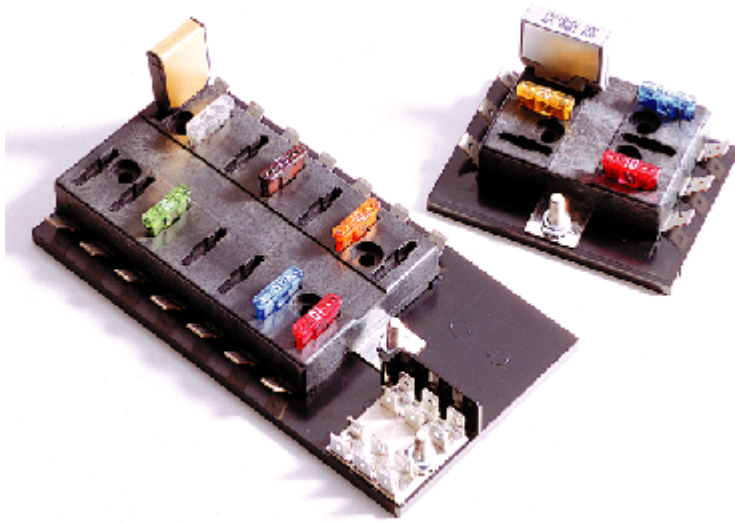
Recommended Wire Size: Input Power #4-6; Output Circuits #12-16.

Positions: Provides 4 to 20 output circuits.

Material: Black, UL rated 94VO thermoplastic, -20°F to 150°F (0°C to 65°C).

Applications: Compact and lightweight, yet rugged enough for use in trucks, buses, boats, RV's, etc. Recommended for supplemental accessory power requirements. See 15700 Series or 3000 Series VEC for main power distribution systems.

Other Features: No top cover needed; recessed trifurcated fuse contacts. Recessed mounting holes.



PART NUMBERING SYSTEM

Series	No. of Fuses &/or Circuit Breaker Positions	Hardware Options	Ground Terminal Base
0 0 0 0 0	04-20	0	0
0 0 0 0 0	04-16 / 04-16 (max. combination of 20)	0 - W/O nuts 1 - Nuts shipped bulk 2 - Nuts assembled	0 - None 1 - Include Ground Pad